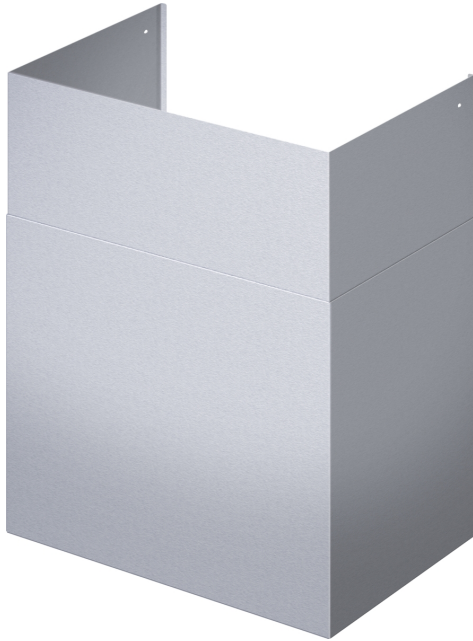


**Chimney, 836 mm
DC481012W**



Fits from 10-foot to 12-foot ceilings

- Compatible with 48" wide Professional Wall Hood
- Telescoping design
- Perfect match to stainless steel finish of the Thermador Professional Wall Hoods
- Two pieces included in the telescoping design
- Lower duct cover piece is 30" Tall; Upper duct cover piece is 32" tall

Product group:Accessory
Brand:Thermador
Product name / series name:
SKU:DC481012W
Internal article number:00000000023000925
EAN code:825225962083
Product Packaging Dimensions (HxWxD): 13 7/8" x 35 5/8" x 16 7/8"
Net Weight:22.000 lbs
Gross Weight:26.000 lbs
Quantity per packing unit:
Standard number of units per pallet:
UPC code:825225962083



**Chimney, 836 mm
DC481012W**

measurements in inches (mm)

