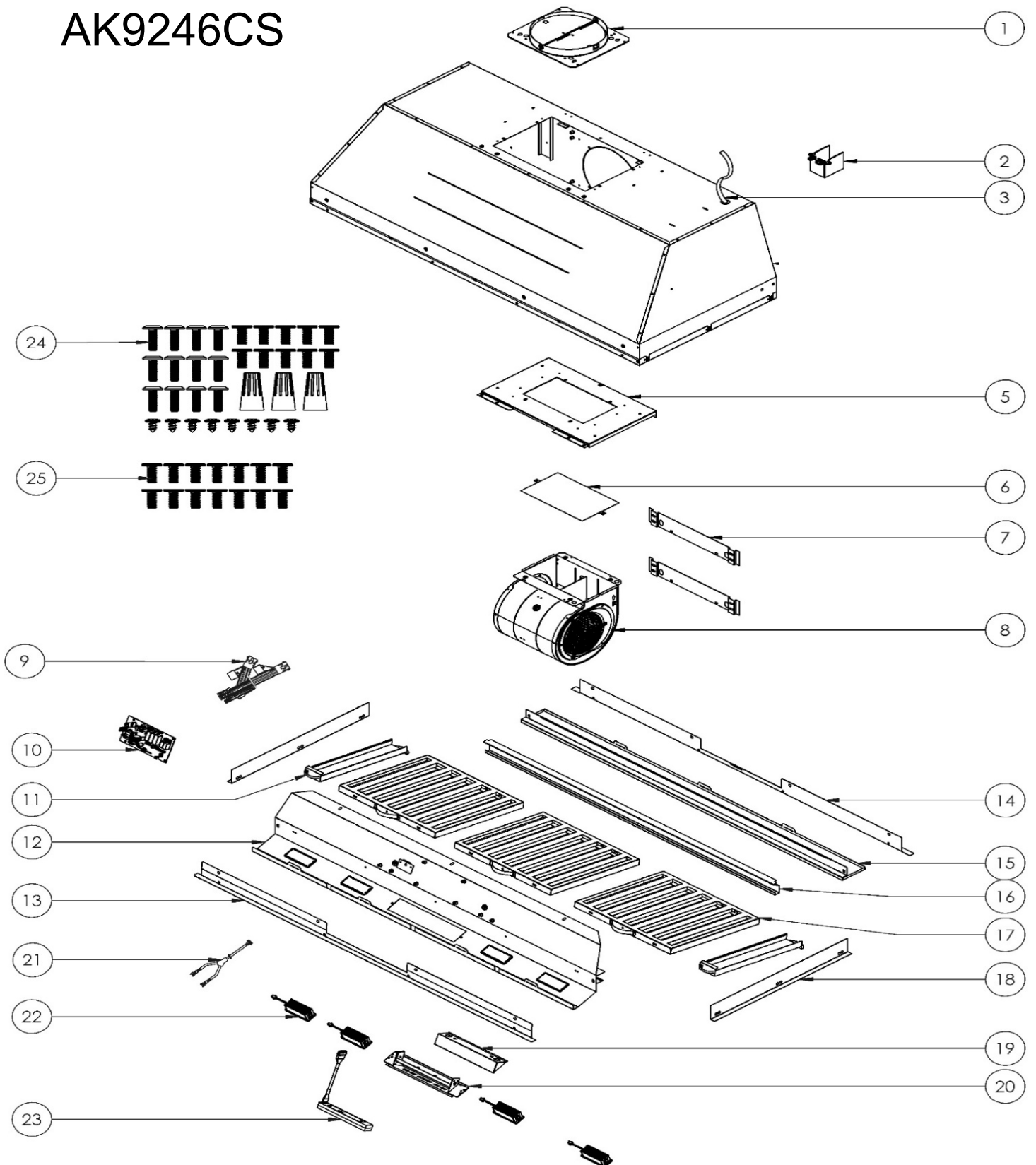


AK9228CS
AK9234CS
AK9240CS
AK9246CS

ZEPHYR



ZEPHYR

Monsoon I

AK9228CS, AK9234CS, AK9240CS, AK9246CS

| Ref # | Part # | Description | Qty. |
|-------|----------|--|------|
| 1 | 54050080 | 8 Inch Duct Collar | 1 |
| 2 | 54200011 | Electrical Junction Box | 1 |
| 3 | 11030020 | Electrical Cord | 1 |
| 5 | 54190041 | Single Internal Blower Plate (34", 40", 46") | 1 |
| 6 | 52170069 | Top Ducting Plate | 1 |
| 7 | 54140146 | Rear Blower Mounting Brackets | 2 |
| 8 | 12120070 | Motor | 1 |
| 9 | 12050028 | Capacitor (28") | 1 |
| 9 | 12050044 | Capacitor Assembly (34", 40", 46") | 1 |
| 10 | 11010217 | Control Board (28") | 1 |
| 10 | 11010218 | Control Board (34", 40") | 1 |
| 10 | 11010219 | Control Board (46") | 1 |
| 11 | 50120259 | Side Spacer Panel (34") | 2 |
| 11 | 50120261 | Side Spacer Panel (40") | 2 |
| 11 | 50120263 | Side Spacer Panel (46") | 2 |
| 12 | 50110481 | Light Panel (28") | 1 |
| 12 | 50110482 | Light Panel (34") | 1 |
| 12 | 50110483 | Light Panel (40") | 1 |
| 12 | 50110484 | Light Panel (46") | 1 |
| 13 | 50170096 | Trim Kit, Front (28") | 1 |
| 13 | 50170097 | Trim Kit, Front (34") | 1 |
| 13 | 50170098 | Trim Kit, Front (40") | 1 |
| 13 | 50170099 | Trim Kit, Front (46") | 1 |
| 14 | 50170100 | Trim Kit, Rear (28") | 1 |
| 14 | 50170101 | Trim Kit, Rear (34") | 1 |
| 14 | 50170102 | Trim Kit, Rear (40") | 1 |

| | | | |
|----|----------|---------------------------------|---|
| 14 | 50170103 | Trim Kit, Rear (46") | 1 |
| 15 | 50120200 | Rear Panel (28") SN10 | 1 |
| 15 | 50120286 | Rear Panel (28"), SN11+ | 1 |
| 15 | 50120260 | Rear Panel (34") SN10 | 1 |
| 15 | 50120287 | Rear Panel (34"), SN11+ | 1 |
| 15 | 50120262 | Rear Panel (40") SN10 | 1 |
| 15 | 50120288 | Rear Panel (40"), SN11+ | 1 |
| 15 | 50120264 | Rear Panel (46") SN10 | 1 |
| 15 | 50120289 | Rear Panel (46"), SN11+ | 1 |
| 16 | 56130044 | Residue Tray (28", 34", 40") | 1 |
| 16 | 56130045 | Residue Tray (46") | 1 |
| 17 | 50210039 | Pro Baffle Filter (46" x 3) | 2 |
| 18 | 50170104 | Trim Kit, Side, SN10 | 2 |
| 18 | 50170111 | Trim Kit, Side, SN11+ | 2 |
| 19 | 54140399 | Switch Bracket | 1 |
| 20 | 52170092 | Switch Cover | 1 |
| 21 | 11030207 | LED Light Wiring Harness | 1 |
| 22 | Z0B0067 | LumiLight LED w/TruHue, 6W DC | 2 |
| 23 | 11000200 | Switch Assembly (28") | 1 |
| 23 | 11000201 | Switch Assembly (34", 40", 46") | 1 |
| 24 | 05000090 | Hardware Packet | 1 |
| 25 | 05000227 | Hardware Packet, Trim Kit | 1 |

APR26.0201